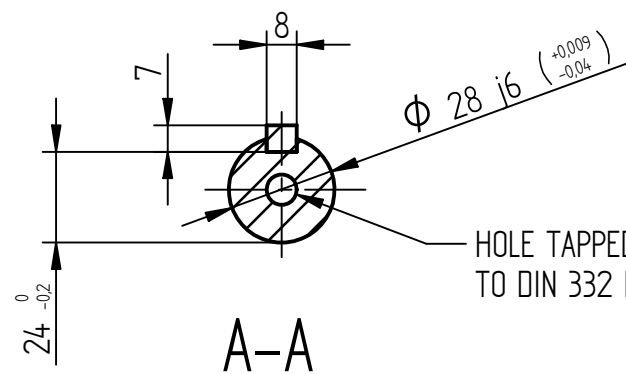
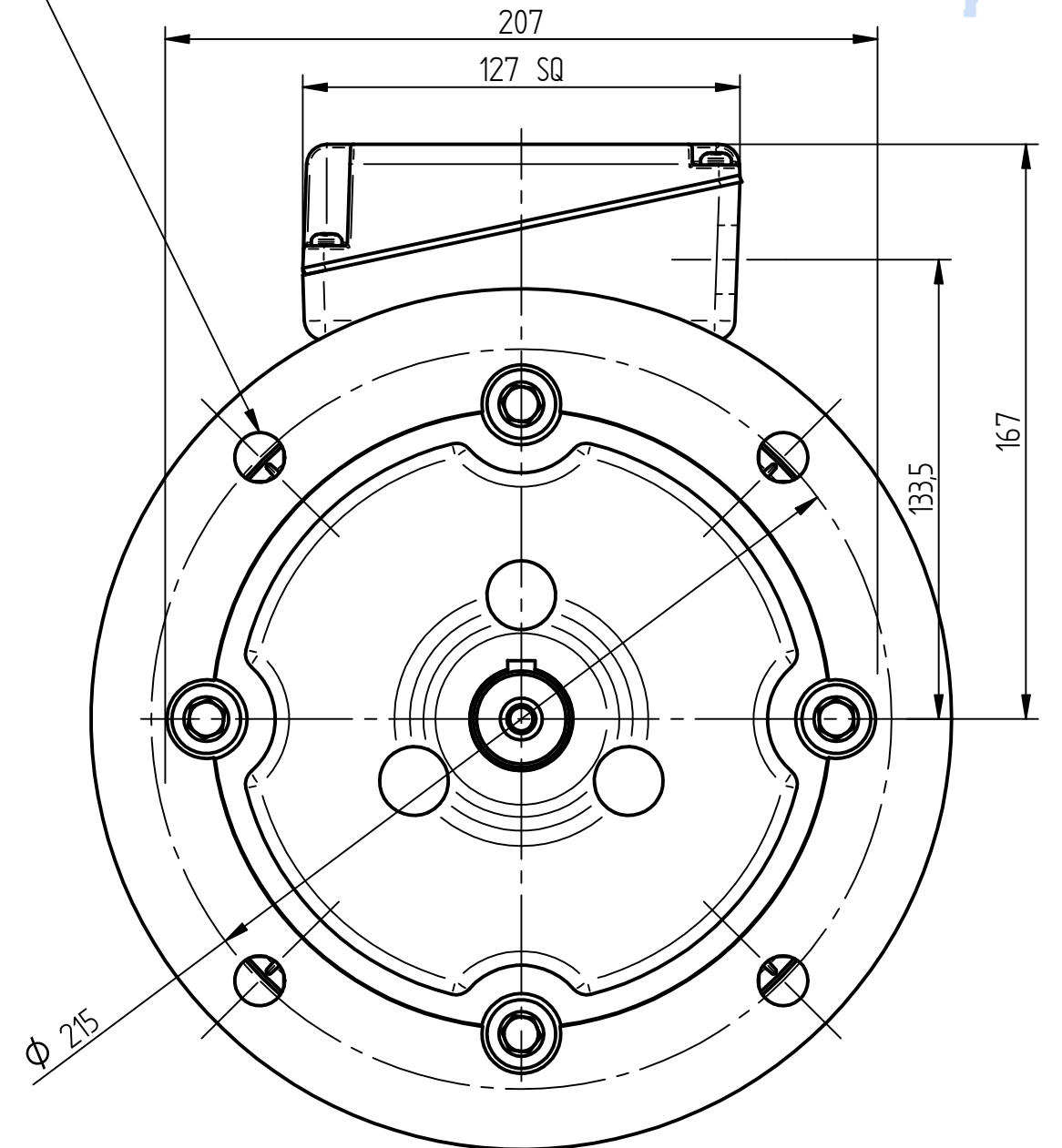


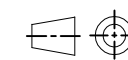
4 Holes $\phi 14,5\text{mm}$
equi-spaced as shown



HOLE TAPPED M10x22 DEEP
TO DIN 332 FORM D

CONDUIT ENTRIES:- TERMINAL BOX CAN BE ROTATED AT 90° INTERVALS

ALL DIMENSIONS IN MILLIMETERS



FIRST ANGLE
PROJECTION

**BROOK
CROMPTON**

Produced by **Tamel S.A.** a company of **ATB**
Technology in Motion

SHEET
SIZE

A3

TITLE:

OUTLINE DIMENSION DRAWING W ALUMINIUM TOTALLY ENCLOSED FAN COOLED
112MWX 'D' FACE MOUNTED MOTOR

	NAME	DATE
DRAWN	KCH	30-03-12
CHECKED	AWW	30-03-12
SCALE	1:2	

DRG. No. W11GD002

DRG. REF.

REVISION:

DATE: